

# Big Spawn Count 2012

*Please print this form and take it with you to the pond*

## Where did you do the survey?

Post code or grid reference

Town/County

Contact email (optional)

|  |
|--|
|  |
|  |
|  |

Site of pond?

Garden

School

Other

|  |
|--|
|  |
|  |
|  |

## Tell us about your pond

How big is your pond?

(Tick below)

Small (1m x 1m or less)

Medium (up to 5m x5m)

Large (bigger than this)

|  |
|--|
|  |
|  |
|  |

How deep is your pond?

Nowhere more than 30cm (1 foot)

Up to 60cm deep (2 foot)

Deeper than this

|  |
|--|
|  |
|  |
|  |

## Creatures in your pond

Do you have any fish in the pond?

Yes

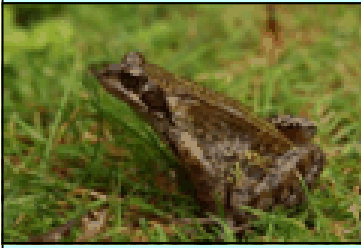
No

|  |
|--|
|  |
|  |

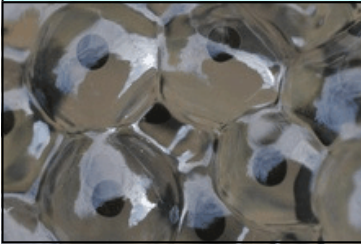
If yes, what sort of fish?

|  |
|--|
|  |
|--|

## What did you see?



Adult common frog



Frog spawn



Frog spawn clumps

Date first seen

Number of clumps



Date maximum seen

Number of clumps



Adult common toad



Toad spawn

## Where next?

Enter your findings online— <http://www.pondconservation.org.uk/bigponddip/BigSpawncount>  
 or post your form to us at: Pond Conservation, c/o Faculty of Health & Life Sciences, Oxford Brookes University, Gipsy Lane, Oxford, OX3 0BP

Find out more about wildlife in your garden pond on our website

<http://www.pondconservation.org.uk/>