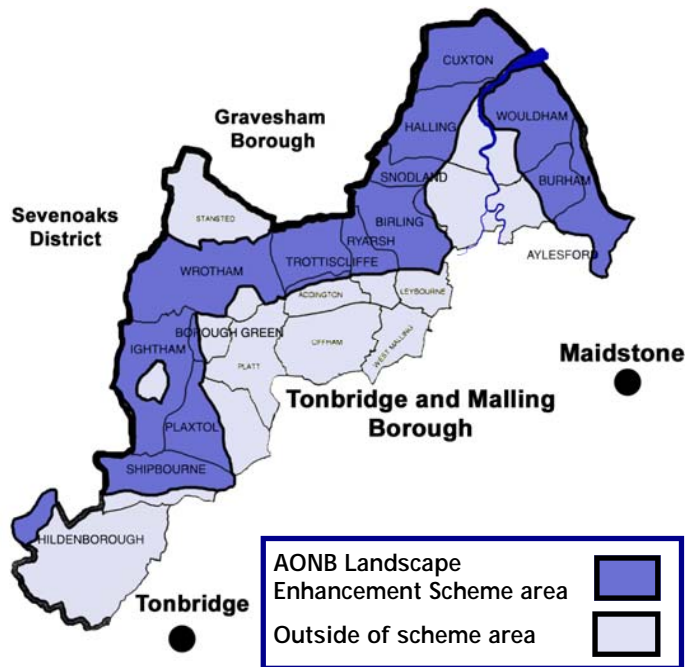


Area this scheme covers



The scheme is available to landowners in the AONB in the following parishes:

Plaxtol	Hildenborough
Shipbourne	Ightham
Borough Green	Wrotham
Trottiscliffe	Ryarsh
Birling	Snodland
Halling	Cuxton
Wouldham	Burham
Aylesford	Addington

If you live in the Sevenoaks or Gravesham area, a similar scheme is available through:

The North West Kent Countryside Partnership
Mead Crescent, Mead Road, Dartford, Kent DA1 2SH
Tel: 01322 294727

For locations between Lenham and Boxley, contact:
The Mid Kent Downs Project,
West Barn, Penstock Hall, Canterbury Rd, East
Brabourne, Ashford. TN25 5LL
Tel: 01303 815170

The Medway Valley Countryside Partnership

MVCP is a countryside management partnership that works to enhance the local countryside and environment of the River Medway catchment, its tributaries and the countryside surrounding the Medway valley.

What we do ...

- Provide advice and practical support to communities to conserve wildlife habitats and the landscape through advice, training and practical action.
- Support landowners in enhancing the Medway valley and surrounding countryside by providing advice about schemes and practical assistance, for example control programmes for invasive species and Environmental Stewardship Applications.
- Work with the local community, Borough and Parish Councils and Public Rights of Way to improve access and recreation throughout the Medway Valley.
- Work in partnership for the management of special habitats and species such as fens or ponds, otters, barn owls and water voles.
- Give site visits, talks, presentations and leaflets to schools, Parish Councils, community groups and landowners
- Provide opportunities for people of all ages to volunteer to carry out practical tasks, survey work and enhance their local area.

The Medway Valley Countryside Partnership is supported by:



Landscape & Biodiversity Enhancement Schemes for the Kent Downs

For Parishes in Tonbridge & Malling Borough and Medway Unitary Authority within the Kent Downs Area of Outstanding Natural Beauty



Plaxtol	Ryarsh
Shipbourne	Wouldham
Ightham	Hildenborough
Borough Green	Snodland
Wrotham	Halling
Trottiscliffe	Cuxton
Birling	Burham
Addington	Aylesford

The landscape of the Kent Downs Area of Outstanding Natural Beauty (AONB) is a nationally important one which is specially protected. It is unique and beautiful, but there are ways in which it can be improved.

This small scale scheme is available to landowners within the AONB and can assist towards the costs of landscape and biodiversity enhancements. It is available within the work area of the



Medway Valley Countryside Partnership (MVCP) and will help towards the cost of materials and labour. Funding of up to £1500 is available in the area shown on the map overleaf.

Who can apply?

Landowners within the AONB can apply, this includes:

- Individuals,
- Schools,
- Parish Councils,
- Community groups,
- Private landowners.

Projects are assessed by MVCP, who are also able to offer free site visits to help with scheme applications. Successful projects will help improve both the landscape and wildlife of the AONB's distinct character areas. Some examples of projects you may want to consider are shown in the box to the right.

Within the different landscape character areas within the AONB there are many ways that the countryside can be enhanced. Although the improvements may vary slightly in different areas, there are some general guidelines for projects which are likely to be suitable for funding.



Projects should ideally include some public benefit, for example by being visible from public footpaths.

For more information and advice about this scheme and the suitability of projects call MVCP. We will be able to send you further details, provide a free initial site visit and advice on ways to improve your local environment.

What this scheme will fund

- New native hedge planting.
- Hedge laying.
- Restoration of cobnut platts.
- Planting of hedgerow trees.
- Small woodland planting in some areas.
- Help with work on historic orchards.
- Management of chalk downland.
- Pond creation and restoration.
- Scrub clearance.
- Scrape creation.
- Non-native tree felling.

We cannot fund:

- Schemes already supported by public funds, for example through the Environmental Stewardship Schemes or Woodland Grant Schemes.
- Repeat management operations.
- Works required under planning consents or for screening development.
- Planting of commercial orchards, single line windbreaks, ornamental or coniferous trees.

This scheme is funded by Interreg and Tonbridge & Malling Borough Council.

For more information on the AONB contact:
The Kent Downs AONB Unit, West Barn, Penstock Hall, Canterbury Rd, East Brabourne, Ashford, Kent TN25 5LL.

01303 815170

www.kentdowns.org.uk

For more information or a site visit please see our website www.medwayvalley.org or call 01622 683695.